

APPRENTICESHIPS WE OFFER

- Carpenter
- Diver
- Millwright
- Pile Driver
- Scaffold Erector

WIDE ARRAY OF TRAINING AVAILABLE

- Advanced Math
- Building Codes
- Certified Welding Inspector
- Confined Space
- Forklift
- Interior Systems
- Millwright Precision Optics
- Rigging & Signaler
- Scaffold User & Erector
- Underwater Bridge Inspection
- Welding

Anchorage

8751 King Street Anchorage, AK 99515
 Phone: (907)344-1541
 admin@ubctrainingak.net
 www.sactcapprentice.org
<https://www.facebook.com/Southerncarpenters>



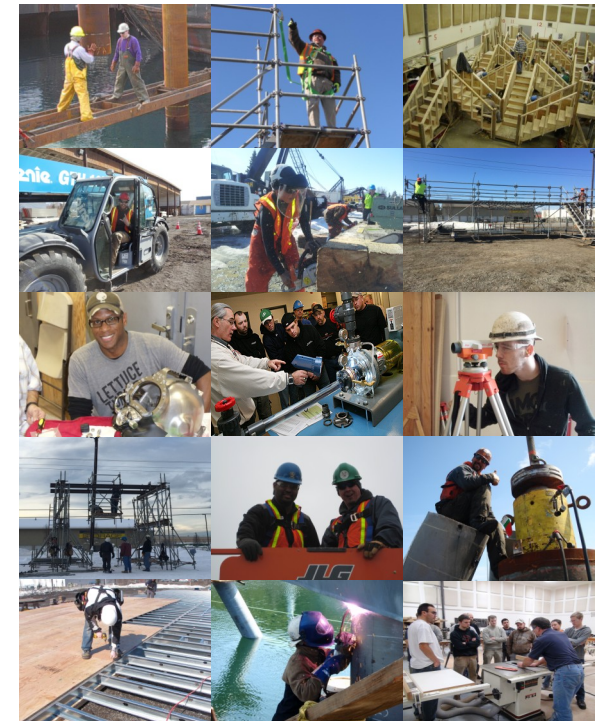
Fairbanks

6 Timberland Drive Fairbanks, AK 99701
 Phone: (907)452-4626
 coordinator@ubctrainingak.net



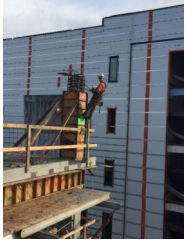
ALASKA CARPENTERS TRAINING TRUST

*"Through Our Doors Pass the Best
Trained Builders in the Nation"*



WWW.SACTCAPPRENTICE.ORG

Carpenter



Carpenters are responsible, at least in part, for creating just about every building in your community. Homes, schools, malls, and office buildings are built from scratch through the skill and experience of professional carpenters. To be a Carpenter is to be a member of one of the oldest and most respected trades in the world. If you enjoy working with tools, like to see your work produce immediate results, and if you have a good work ethic, you can build a lifetime career in carpentry.

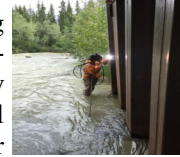
Millwright

Millwrights are an elite group of construction workers who work primarily in metal and with machinery and equipment requiring precision. Millwrights install, maintain, diagnose, and repair industrial machines that usually cost millions of dollars. Work is done on compressors, pumps, conveyors, monorails, extruders, turbines, and mining equipment using hand and power tools, including welding equipment. Millwrights may adjust a machine's calibration just the width of a human hair and increase that machine's productivity by 20%.

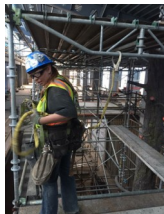


Piledriver

Whether constructing, maintaining or demolishing structures, a Piledriver's work is generally very strenuous. Pilebutts perform all heavy labor incidental to their work. They load and unload their broad gauge lumber, construction forms and piling up to eighty or more feet in length. They manhandle, rig, erect and drive wooden, steel and cement pile. They construct, move, set and scale all the forms and shapes used in the laying of cast-in-place structures. They shore and brace any excavations undertaken in connection with their work. They perform this work on a variety of maritime and shoreside locations including barges, work floats, tugboats, wharves, piers, pontoons and foundation excavations.



Scaffold Erector



If you enjoy working outdoors and at high elevations, a job as a scaffold erector may be for you. Scaffold erectors are responsible for building and taking down scaffolds and temporary structures for building and ship structures. Our program exceeds OSHA mandates and is designed to produce builders fluent in all types of scaffolds including QES, Cuplok, Safway, and Tube and Clamp. With rigorous classes in layout and leg load capacities, along with an extensive safety program, our builders are the safest and most productive scaffold builders in the world.

Benefits of Apprenticeship

- Tuition free training
- Paid medical and retirement Benefits
- Higher wages
- Industry leading training
- VA approved
- Job security



Requirements to Apply

- 18 years of age or older
- Possess a high school diploma or equivalent (GED)
- Have an Alaska drivers license
- Willingness to submit to, and pass, a drug and alcohol screening
- Physically capable of performing the essential functions of the occupation